

POWER WINDOW CONTROL SYSTEM

TROUBLESHOOTING

BEQJO-07

RHD Models:

1	One touch power window does not move up and down. (Prepare normal master switch.)
---	---

After turning the ignition switch ON and power window master switch UP or DOWN on the driver's side, check that the master switch AUTO light blinks.

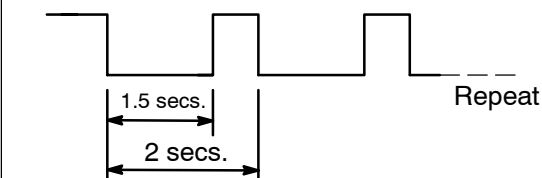
- Error is classified into the following 3 types according to the way of blinking.

UP or DOWN

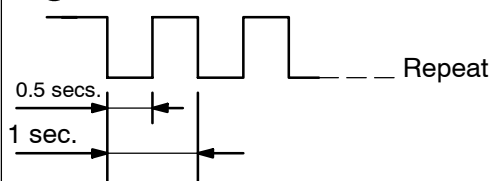
ON

OFF

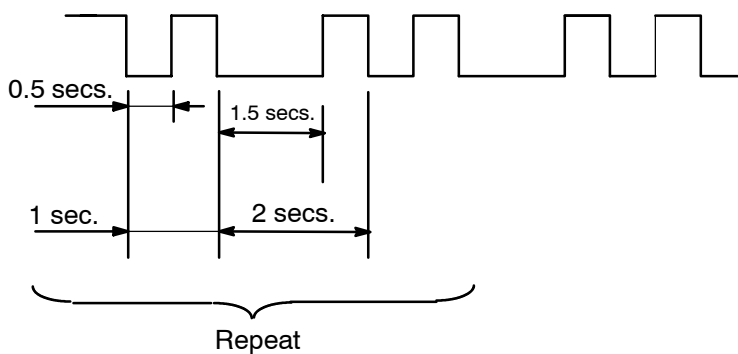
① Limit switch error



② Pulse sensor error



③ Limit switch/Pulse sensor synchronize error



- < Reference >
- When 30 seconds elapsed since blinking started, blinking finishes. (AUTO light remains ON)
 - When turning the ignition key OFF, blinking finishes.

Blinks in the ① way

Remove the master switch.
(Connector connection condition)

When the fully closed driver's door is opened, does the voltage between 19 terminal and 20 terminal of master switch change from 0 V to 10 - 14 V?

Yes

CONTINUE ON NEXT PAGE

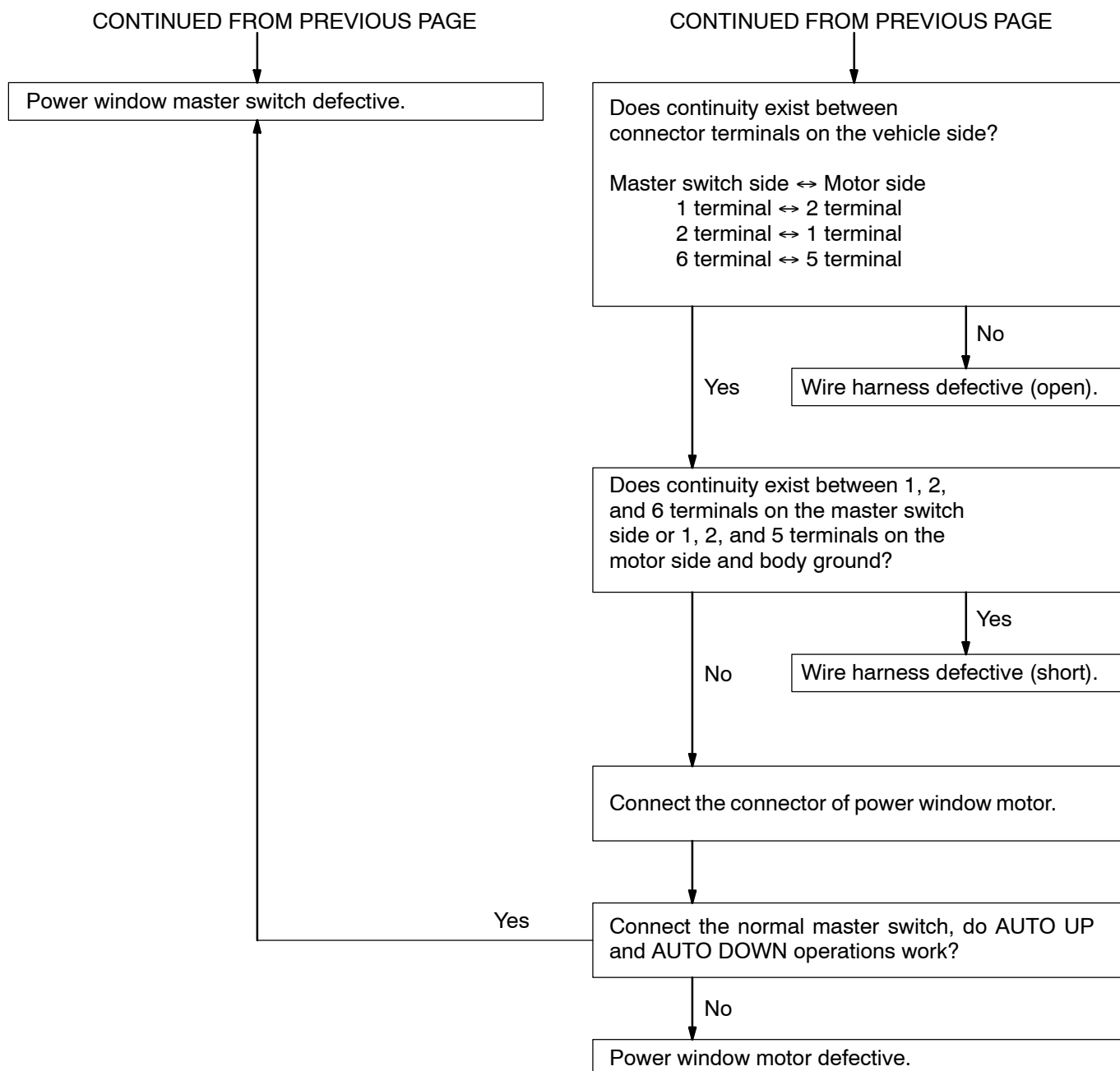
No

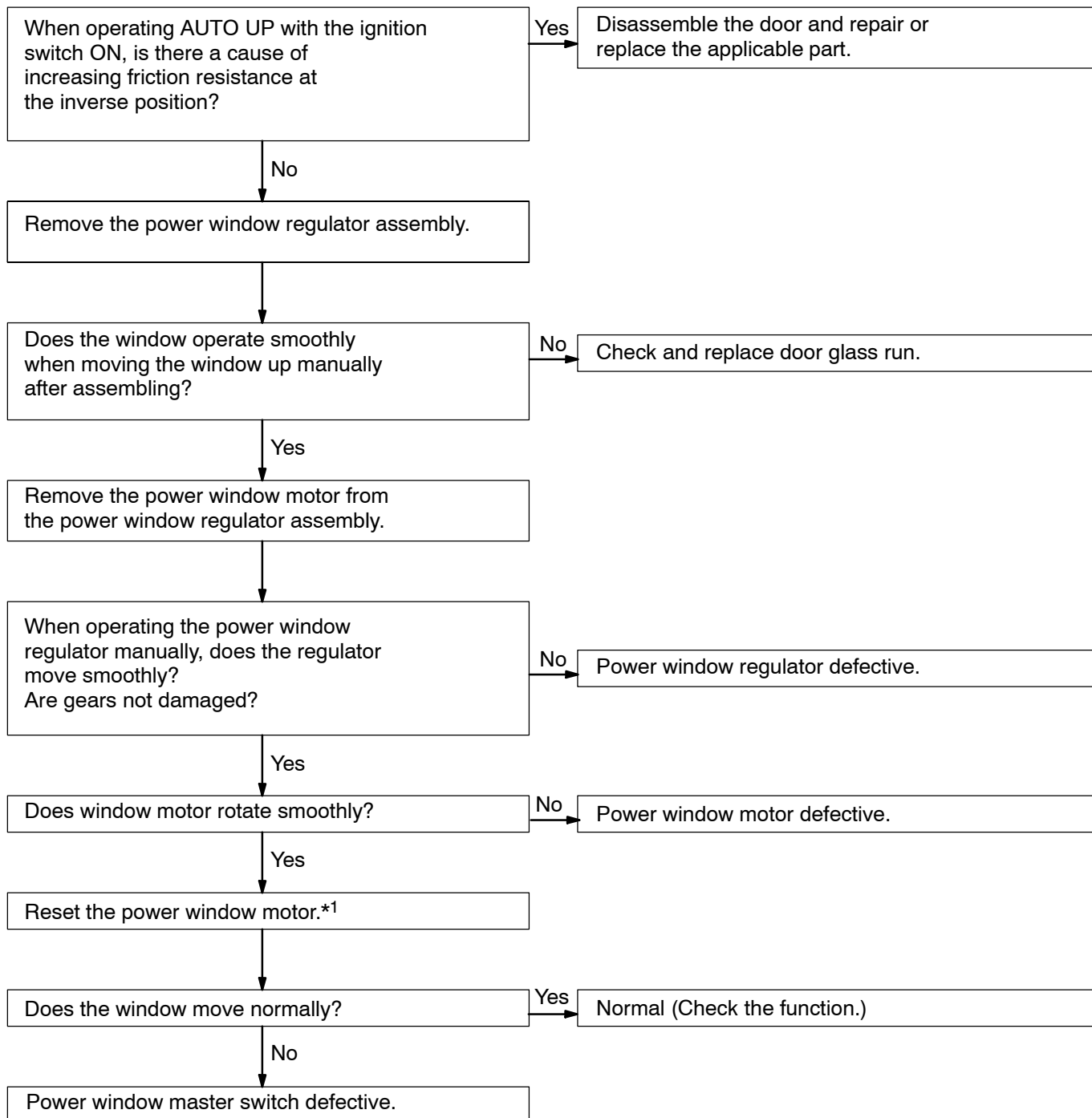
Master switch defective

Blinks in the ② or ③ way

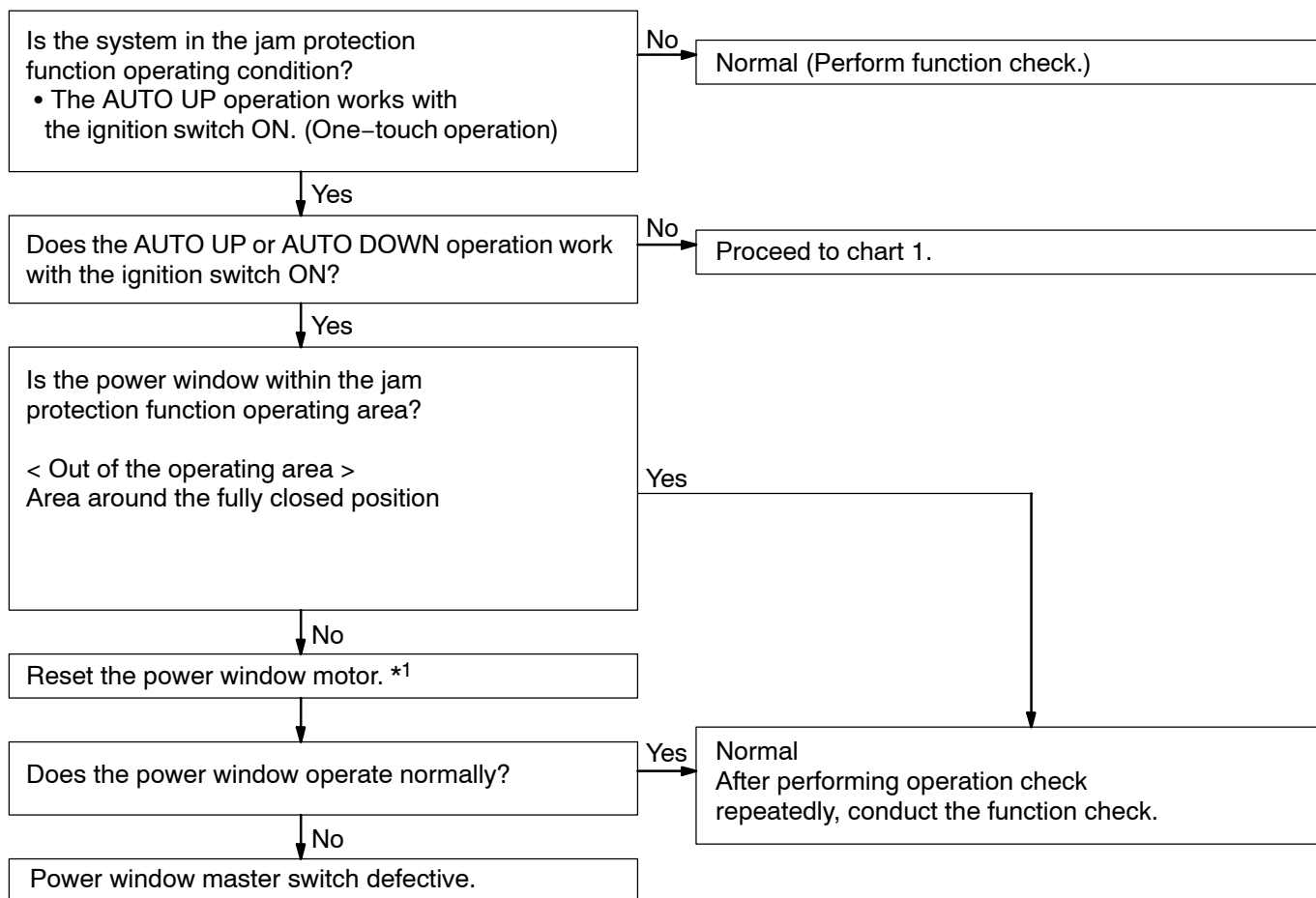
Disconnect the connectors of master switch and driver's power window motor.

CONTINUE ON NEXT PAGE



2 During AUTO UP operation, the power window moves down.

3 The DOWN function does not work though some other objects are caught in the power window glass.



*1 Resetting method of the motor for jam protection.

- Remove the power window motor.
- Connect the motor to the vehicle side harness.
- Rotate the motor from 6 to 10 turns or for 4 – 5 secs. moving it to the glass ascending direction.
- Install the power window motor.

HINT:

- When performing the operation described below, it is necessary to reset the power window (Initial setting of limit switch).
 - When the window regulator is separated from the power window motor.
 - When the window regulator is operated with the door glass not installed.
- After reset operation, because the jam protection function dose not work, after repeating AUTO UP ← → AUTO DOWN, inspect the function.